

2010



CITY OF ST. MARYS RECYCLING CALENDAR

WHO: Elk Waste Services, Inc. will collect recyclables.
WHAT: Clear, brown & green glass, aluminum, and newspaper.
WHEN: Every other week.
WHERE: Place container at curbside by 7:00 A.M.

FOR ADDITIONAL INFORMATION
CALL ELK WASTE SERVICES

834-6771 OR 781-1718

- 26 THANKSGIVING DAY 2010 PICK-UP

| | | | |
|---|---|---|--|
| <p>JANUARY 2010 SUN MON TUE WED THU FRI SAT</p> <p>1 2 3 4 5 6 7 8 9 10 11 12 13 14 15 16 17 18 19 20 21 22 23 24/31 25 26 27 28 29 30</p> | <p>FEBRUARY 2010 SUN MON TUE WED THU FRI SAT</p> <p>1 2 3 4 5 6 7 8 9 10 11 12 13 14 15 16 17 18 19 20 21 22 23 24 25 26 27 28</p> | <p>MARCH 2010 SUN MON TUE WED THU FRI SAT</p> <p>1 2 3 4 5 6 7 8 9 10 11 12 13 14 15 16 17 18 19 20 21 22 23 24 25 26 27 28 29 30 31</p> | <p>APRIL 2010 SUN MON TUE WED THU FRI SAT</p> <p>1 2 3 4 5 6 7 8 9 10 11 12 13 14 15 16 17 18 19 20 21 22 23 24 25 26 27 28 29 30</p> |
| <p>MAY 2010 SUN MON TUE WED THU FRI SAT</p> <p>1 2 3 4 5 6 7 8 9 10 11 12 13 14 15 16 17 18 19 20 21 22 23/30 24/31 25 26 27 28 29</p> | <p>JUNE 2010 SUN MON TUE WED THU FRI SAT</p> <p>1 2 3 4 5 6 7 8 9 10 11 12 13 14 15 16 17 18 19 20 21 22 23 24 25 26 27 28 29 30</p> | <p>JULY 2010 SUN MON TUE WED THU FRI SAT</p> <p>1 2 3 4 5 6 7 8 9 10 11 12 13 14 15 16 17 18 19 20 21 22 23 24 25 26 27 28 29 30 31</p> | <p>AUGUST 2010 SUN MON TUE WED THU FRI SAT</p> <p>1 2 3 4 5 6 7 8 9 10 11 12 13 14 15 16 17 18 19 20 21 22 23 24 25 26 27 28 29 30 31</p> |
| <p>SEPTEMBER 2010 SUN MON TUE WED THU FRI SAT</p> <p>1 2 3 4 5 6 7 8 9 10 11 12 13 14 15 16 17 18 19 20 21 22 23 24 25 26 27 28 29 30</p> | <p>OCTOBER 2010 SUN MON TUE WED THU FRI SAT</p> <p>1 2 3 4 5 6 7 8 9 10 11 12 13 14 15 16 17 18 19 20 21 22 23 24/31 25 26 27 28 29 30</p> | <p>NOVEMBER 2010 SUN MON TUE WED THU FRI SAT</p> <p>1 2 3 4 5 6 7 8 9 10 11 12 13 14 15 16 17 18 19 20 21 22 23 24 25 26 27 28 29 30</p> | <p>DECEMBER 2010 SUN MON TUE WED THU FRI SAT</p> <p>1 2 3 4 5 6 7 8 9 10 11 12 13 14 15 16 17 18 19 20 21 22 23 24 25 26 27 28 29 30 31</p> |

• PLACE AT CITY OR STATE MAINTAINED ROAD

| | |
|---|---|
| <p>RED TUESDAY - Queen of the World Area</p> <p>ANNE ASPEN BAYBERRY BEECH BURCH CEDAR CLARK COMET DENISE ELM EVERGREEN FALCON FORD GRACE GRANDVIEW LARCH LOCUST MARGARET MARITIN MERCURY PLYMOUTH POPLAR QUEENS RAMBLER SARA S. MICHAEL TO 802 VINE TO 728 WENDEL W. ESCHBACH WILLOW</p> | <p>BLACK TUESDAY - Benzinger Park Area</p> <p>ALPINE AVERYVILLE BEL VISTA CADILLAC CAPRI CATALINA CHERRY HILL * EARL EDGEWOOD FERN FLEMING * FREEDOM HEMLOCK HICKORY JERA LANG LAS. GLORIS LEMANS LIBERTY MALIBU MARIENSTADT * MCKENNDY NOVA PARKVIEW * PEARL ROBIN S. MICHAEL 803 TO 1093 SO. RIDGE SUNRISE TRAILER COURT. TEABERRY VILLA VINE RD. 729 TO 947 WEHLER * WES</p> |
| <p>RED WEDNESDAY</p> <p>AIRPORT ASH BAVARIAN HILL BEZINGER BLAIR BRUSSELS BUCKTAIL CARBON CURRY DARR DEPOT E. ESCHBACH E. KAUL ECKERT FILLMORE FOURTH GRAPHITE GROTZINGER HALL HARRISON HAUBER HIGH JACKSON TO 175 JERSEY JOHN JONES KAUL LECKER LEHNER LINCOLN MERTZ MONROE MULLIGAN NEUBERT PINE PONTZER RETTGER ROSELY TO BLAIR SCHISSE SIMMON SORG SO. MICHAEL 1064 TO LECKER RD STACKPOLE SWEENEY THERESA ST. TROUT RUN VALLEY WRIGHT</p> | <p>BLACK WEDNESDAY</p> <p>ANTHONY ADMANDEL BAUMER BERWING CHAPEL VILLAGE CHESTNUT CROSS DECKERS CHAPEL EARTH RD AREA E. ARCH E. MILL ELEMENTARY GLEN HAZEL TO SPORTS- MAN CLUB GYPSY HALLER IRON RUN JEEP KALLAS KERNER KEYSTONE LENZE MAPLE MARKET MASON MCGILL MELDOR MUENSTER N. PAUL OAK PARK PATTISON FISTNER RACE RAILROAD RANDOM ROCK ROOSEVELT SERVICE S. LOUIS S. PAUL TO AUGUSTINE S. ST. MARYS SHADY GROVE SIECKER TO TIMBERLINE SPRING SPRUCE STATE SUGAR HILL SUMAR TAFT THUNDER TIMBERLINE TOWNVIEW UHL VINE TO 204 WALNUT WILSON WINDFALL 1059 TO END W. ARCH W. CREEK TO 520 W. JOSEPH W. MILL W. RACE W. THERESA RD</p> |
| <p>RED THURSDAY - North Michael / Center Area</p> <p>ABBOTT ARNOLD BENEDICT CARDINAL CENTER CHARLES CHURCH EAST JOSEPH ETHELDALE ERICH FOREST GAY GEORGE HILL HADDERTY HOUSTON JOHNSONBURG LOMBARDO LYNCH MAURUS NICKLAS N. LOUIS N. MICHAEL OILWELL PARADE PARAWAY POPE ROBSON ROSEDALE SCHOOL SHERRY STRAUB SUNSET VERMONT VIRGINIA WALBURGA W. CONDOT WOLFEL</p> | <p>BLACK THURSDAY - North St. Marys / Washington Area</p> <p>ADAM ARMORY ATLANTIC BANK BUNKER HILL CAROLWOOD COLUMBUS DIAMOND DIPPOLD DOVE E. CONDOT EBEN EDWARD ERIE EVERS FOX FOX HOLLOW GEIS AVE. GRANT IDA JEFFERSON LAFAYETTE MADISON MARK N. ST. MARYS LAWRENCE PENN PRINCE ALLEY RESERVE RIGHTMEYER RUSS LANE TERRACE TREMONT WASHINGTON WINDFALL TO 1058 WOODLAND</p> |

MATCH YOUR STREET WITH THE COLOR AND DAY. YOUR RECYCLABLES WILL BE PICKED UP ON YOUR COLOR AND DAY.

Recycling is Easy! Just Follow the Steps!

ONLY FOOD and BEVERAGE CONTAINERS

HOW TO PREPARE YOUR MATERIALS

GLASS - CLEAR, BROWN, GREEN

1. Rinse - labels can stay on
2. Remove all metal lids
3. No window glass, light bulbs, blue glass, pyrex or ceramics
4. No drinking glasses
5. Place in container
(Do Not Break)
6. No Plastic Bags



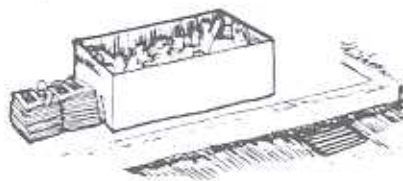
ALUMINUM BEVERAGE CANS

1. Rinse
2. Flatten, if desired, to save space
3. Place in container
4. No soup or vegetable cans
5. No Plastic Bags



NEWSPAPER

1. In bundles and untied plastic bags
2. Must be dry (will be rejected if not)
3. 10 lb. bundles
4. No magazines/no shiny inserts
5. No junk mail



Note: The special container provided for your recyclables remains the property of the City and must remain at each house or apartment. All houses or residents must call the City or ELK WASTE SERVICES for a container.

**Do Not Bag Glass and Aluminum.
No plastic bags please!**

1. GREEN DROP-OFF CONTAINERS FOR NEWSPRINT, MIX PAPER, & BROKEN DOWN CORRUGATED CARDBOARD.
2. GREEN DROP-OFF CONTAINERS FOR ALUMINUM, SOUP & VEGETABLE CANS

LOCATIONS: DEPOT ST. & SO. MICHAEL RD.

COLLECTION DAY

Place container at curbside by 7:00 A.M.