

# 2008



## CITY OF ST. MARYS RECYCLING CALENDAR

**WHO:** Elk Waste Services, Inc. will collect recyclables.  
**WHAT:** Clear, brown & green glass, aluminum, and newspaper.  
**WHEN:** Every other week.  
**WHERE:** Place container at curbside by 7:00 A.M.

**FOR ADDITIONAL INFORMATION  
CALL ELK WASTE SERVICES**

**834-6771 OR 781-1718**

- **26 CHRISTMAS 2008 PICK-UP**
- **28 THANKSGIVING DAY 2008 PICK-UP**

<p><b>JANUARY 2008</b> SUN MON TUE WED THU FRI SAT</p> <p>1 2 3 4 5 6 7 8 9 10 11 12 13 14 15 16 17 18 19 20 21 22 23 24 25 26 27 28 29 30 31</p>	<p><b>FEBRUARY 2008</b> SUN MON TUE WED THU FRI SAT</p> <p>1 2 3 4 5 6 7 8 9 10 11 12 13 14 15 16 17 18 19 20 21 22 23 24 25 26 27 28 29</p>	<p><b>MARCH 2008</b> SUN MON TUE WED THU FRI SAT</p> <p>1 2 3 4 5 6 7 8 9 10 11 12 13 14 15 16 17 18 19 20 21 22 23/30 24/31 25 26 27 28 29</p>	<p><b>APRIL 2008</b> SUN MON TUE WED THU FRI SAT</p> <p>1 2 3 4 5 6 7 8 9 10 11 12 13 14 15 16 17 18 19 20 21 22 23 24 25 26 27 28 29 30</p>
<p><b>MAY 2008</b> SUN MON TUE WED THU FRI SAT</p> <p>1 2 3 4 5 6 7 8 9 10 11 12 13 14 15 16 17 18 19 20 21 22 23 24 25 26 27 28 29 30 31</p>	<p><b>JUNE 2008</b> SUN MON TUE WED THU FRI SAT</p> <p>1 2 3 4 5 6 7 8 9 10 11 12 13 14 15 16 17 18 19 20 21 22 23 24 25 26 27 28 29 30</p>	<p><b>JULY 2008</b> SUN MON TUE WED THU FRI SAT</p> <p>1 2 3 4 5 6 7 8 9 10 11 12 13 14 15 16 17 18 19 20 21 22 23 24 25 26 27 28 29 30 31</p>	<p><b>AUGUST 2008</b> SUN MON TUE WED THU FRI SAT</p> <p>1 2 3 4 5 6 7 8 9 10 11 12 13 14 15 16 17 18 19 20 21 22 23 24/31 25 26 27 28 29 30</p>
<p><b>SEPTEMBER 2008</b> SUN MON TUE WED THU FRI SAT</p> <p>1 2 3 4 5 6 7 8 9 10 11 12 13 14 15 16 17 18 19 20 21 22 23 24 25 26 27 28 29 30</p>	<p><b>OCTOBER 2008</b> SUN MON TUE WED THU FRI SAT</p> <p>1 2 3 4 5 6 7 8 9 10 11 12 13 14 15 16 17 18 19 20 21 22 23 24 25 26 27 28 29 30 31</p>	<p><b>NOVEMBER 2008</b> SUN MON TUE WED THU FRI SAT</p> <p>1 2 3 4 5 6 7 8 9 10 11 12 13 14 15 16 17 18 19 20 21 22 23/30 24 25 26 27 28 29</p>	<p><b>DECEMBER 2008</b> SUN MON TUE WED THU FRI SAT</p> <p>1 2 3 4 5 6 7 8 9 10 11 12 13 14 15 16 17 18 19 20 21 22 23 24 25 26 27 28 29 30 31</p>

\* PLACE AT CITY OR STATE MAINTAINED ROAD

<p><b>RED TUESDAY - Queen of the World Area</b></p> <p>ANNE ASPEN BAYBERRY BEECH BIRCH CEDAR CLARK          COMET DENISE ELM EVERGREEN FALCON FORD GRACE          GRANDVIEW LARCH LOCUST MARGARET MARTIN MERCURY PLYMOUTH          POPLAR QUEENS RAMBLER SARA S. MICHAEL TO 802 VINE TO 728 WENDEL          W. ESCHBACH WILLOW</p>	<p><b>BLACK TUESDAY - Benzinger Park Area</b></p> <p>ALPINE AVERYVILLE BEL VISTA CADILLAC CAPRI CATALINA CHERRY HILL          * EARL EDGEWOOD FERN FLEMING * FREEDOM HEMLOCK HICKORY          JERA LANG LAS. GLORIS LEMANS LIBERTY MALIBU MARIENSTADT          * MCKENNDY NOVA PARKVIEW - PEARL ROBIN S. MICHAEL 803 TO 1093          SO. RIDGE SUNRISE TRAILER COURT TEABERRY VILLA VINE RD. 729 TO 947          WEHLER * WES</p>
<p><b>RED WEDNESDAY</b></p> <p>AIRPORT ASH BAVARIAN HILL BEZINGER BLAIR BRUSSELLS BUCKTAIL CARBON          CURRY DARR DEPOT E. ESCHBACH E. KAUL ECKERT FILLMORE FOURTH          GRAPHITE GROTZINGER HALL HARRISON HAUBER HIGH JACKSON TO 175          JERSEY JOHN JONES KAUL LECKER LEHNER LINCOLN MERTZ          MONROE MULLIGAN NEUBERT PINE PONTZER 1094 TO HIGH RETTGER ROSELY TO BLAIR          SCHISSE SIMMON SORG SO. MICHAEL 1094 TO LECKER RD STACKPOLE SWEENEY          THERESIA ST. TROUT RUN VALLEY WRIGHT</p>	<p><b>BLACK WEDNESDAY</b></p> <p>ANTHONY AUMANDEL BAUMER BERWIND CHAPEL VILLAGE CHESTNUT CROSS DECKERS CHAPEL EARTH RD AREA          E. ARCH E. MILL ELEMENTARY GLEN HAZEL TO SPORTS- MAN CLUB GYPSY HALLER IRON RUN JEEP          KALLAS KERNER KEYSTONE LENZE MAPLE MARKET MASON MCGILL MELODY MUIENSTER          N. PAUL OAK PARK PATTISON RACE RAILROAD RANDOM ROCK ROOSEVELT          SERVICE S. LOUIS S. PAUL TO AUGUSTINE S. ST. MARYS SHADY GROVE SIECKER TO TIMBERLINE SPRING SPRUCE          STATE SUGAR HILL SUMAR TAFT THUNDER THUNDERLINE TOWNVIEW UHL VINE TO 204 WALNUT          WILSON WINDFALL 1059 TO END W. ARCH W. CREEK TO 520 W. JOSEPH W. MILL W. RACE W. THERESIA RD.</p>
<p><b>RED THURSDAY - North Michael / Center Area</b></p> <p>ABBOTT ARNOLD BENEDICT CARDINAL CENTER CHARLES CHURCH          EAST JOSEPH ETHELDALE ERICH FOREST GAY GEORGE HILL          HAGGERTY HOUSTON JOHNSONBURG OILWELL LOMBARDO LYNCH MAURUS NICKLAS          N. LOUIS N. MICHAEL OILWELL PARADE PARKWAY POPE ROBSON          ROSEDALE SCHOOL SHERRY STRAUB SUNSET VERMONT VIRGINIA          WALBURGA W. CONDOT WOLFEL</p>	<p><b>BLACK THURSDAY - North St. Marys / Washington Area</b></p> <p>ADAM ARMORY ATLANTIC BANK BUNKER HILL CAROLWOOD COLUMBUS          DIAMOND DIPPOLD DOVE E. CONDOT EBEN EDWARD ERIE          EVERS FOX FOX HOLLOW GEIS AVE. GRANT IDA JEFFERSON          LAFAYETTE MADISON MARK N. ST. MARYS LAWRENCE PENN PRINCE ALLEY          RESERVE RIGHTMEYER RUSS LANE TAFT TERRACE TREMONT WASHINGTON          WINDFALL TO 1058 WOODLAND</p>

**MATCH YOUR STREET WITH THE COLOR AND DAY. YOUR RECYCLABLES WILL BE PICKED UP ON YOUR COLOR AND DAY.**

# Recycling is Easy! Just Follow the Steps!

## *ONLY FOOD and BEVERAGE CONTAINERS*

### HOW TO PREPARE YOUR MATERIALS

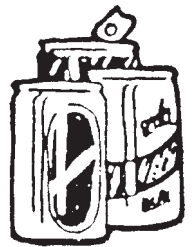
#### GLASS - CLEAR, BROWN, GREEN

1. Rinse - labels can stay on
2. Remove all metal lids
3. No window glass, light bulbs, blue glass, pyrex or ceramics
4. No drinking glasses
5. Place in container  
(Do Not Break)
6. No Plastic Bags



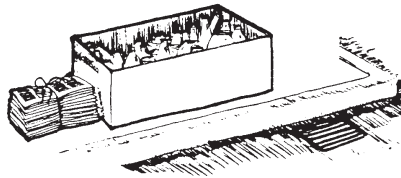
#### ALUMINUM BEVERAGE CANS

1. Rinse
2. Flatten, if desired, to save space
3. Place in container
4. No soup or vegetable cans
5. No Plastic Bags



#### NEWSPAPER

1. In bundles and untied plastic bags
2. Must be dry (will be rejected if not)
3. 10 lb. bundles
4. No magazines/no shiny inserts
5. No junk mail



**Note: The special container provided for your recyclables remains the property of the City and must remain at each house or apartment. All houses or residents must call the City or ELK WASTE SERVICES for a container.**

**Do Not Bag Glass and Aluminum.  
No plastic bags please!**

1. GREEN DROP-OFF CONTAINERS FOR NEWSPRINT, MIX PAPER, & BROKEN DOWN CORRUGATED CARDBOARD.
2. GREEN DROP-OFF CONTAINERS FOR ALUMINUM, SOUP & VEGETABLE CANS

LOCATIONS: DEPOT ST. & SO. MICHAEL RD.

#### COLLECTION DAY

Place container at curbside by 7:00 A.M.