

2009



CITY OF ST. MARYS RECYCLING CALENDAR

WHO: Elk Waste Services, Inc. will collect recyclables.
WHAT: Clear, brown & green glass, aluminum, and newspaper.
WHEN: Every other week.
WHERE: Place container at curbside by 7:00 A.M.

FOR ADDITIONAL INFORMATION
CALL ELK WASTE SERVICES

834-6771 OR 781-1718

- **2** NEW YEARS DAY 2009 PICK-UP
- **27** THANKSGIVING DAY 2009 PICK-UP

JANUARY 2009	FEBRUARY 2009	MARCH 2009	APRIL 2009
SUN MON TUE WED THU FRI SAT 1 2 3 4 5 6 7 8 9 10 11 12 13 14 15 16 17 18 19 20 21 22 23 24 25 26 27 28 29 30 31	SUN MON TUE WED THU FRI SAT 1 2 3 4 5 6 7 8 9 10 11 12 13 14 15 16 17 18 19 20 21 22 23 24 25 26 27 28	SUN MON TUE WED THU FRI SAT 1 2 3 4 5 6 7 8 9 10 11 12 13 14 15 16 17 18 19 20 21 22 23 24 25 26 27 28 29 30 31	SUN MON TUE WED THU FRI SAT 1 2 3 4 5 6 7 8 9 10 11 12 13 14 15 16 17 18 19 20 21 22 23 24 25 26 27 28 29 30
MAY 2009	JUNE 2009	JULY 2009	AUGUST 2009
SUN MON TUE WED THU FRI SAT 1 2 3 4 5 6 7 8 9 10 11 12 13 14 15 16 17 18 19 20 21 22 23 24/31 25 26 27 28 29 30	SUN MON TUE WED THU FRI SAT 1 2 3 4 5 6 7 8 9 10 11 12 13 14 15 16 17 18 19 20 21 22 23 24 25 26 27 28 29 30	SUN MON TUE WED THU FRI SAT 1 2 3 4 5 6 7 8 9 10 11 12 13 14 15 16 17 18 19 20 21 22 23 24 25 26 27 28 29 30 31	SUN MON TUE WED THU FRI SAT 1 2 3 4 5 6 7 8 9 10 11 12 13 14 15 16 17 18 19 20 21 22 23/30 24/31 25 26 27 28 29
SEPTEMBER 2009	OCTOBER 2009	NOVEMBER 2009	DECEMBER 2009
SUN MON TUE WED THU FRI SAT 1 2 3 4 5 6 7 8 9 10 11 12 13 14 15 16 17 18 19 20 21 22 23 24 25 26 27 28 29 30	SUN MON TUE WED THU FRI SAT 1 2 3 4 5 6 7 8 9 10 11 12 13 14 15 16 17 18 19 20 21 22 23 24 25 26 27 28 29 30 31	SUN MON TUE WED THU FRI SAT 1 2 3 4 5 6 7 8 9 10 11 12 13 14 15 16 17 18 19 20 21 22 23 24 25 26 27 28 29 30	SUN MON TUE WED THU FRI SAT 1 2 3 4 5 6 7 8 9 10 11 12 13 14 15 16 17 18 19 20 21 22 23 24 25 26 27 28 29 30 31

• PLACE AT CITY OR STATE MAINTAINED ROAD

RED TUESDAY - Queen of the World Area							BLACK TUESDAY - Benzinger Park Area						
ANNE ASPEN BAYBERRY BEECH BIRCH CEDAR CLARK	COMET DENISE ELM EVERGREEN FALCON FORD GRACE	GRANDVIEW LARCH LOCUST MARGARET MARTIN MERCURY PLYMOUTH	POPLAR QUEENS RAMBLER SARA S. MICHAEL TO 802 VINE TO 728 WENDEL	W. ESCHBACH WILLOW	ALPINE AVERYVILLE BEL VISTA CADILLAC CAPRI CATALINA CHERRY HILL	* EARL EDGEWOOD FERN FLEMING FREEDOM HEMLOCK HICKORY	JERA LANG LAS. GLORIS LEMANS LIBERTY MALIBU MARJENSTADT	* MCKENNDY NOVA PARKVIEW PEARL ROBIN S. MICHAEL 803 TO 1093	SO. RIDGE SUNRISE TRAILER COURT TEABERRY VILLA VINE RD. 729 TO 947	WEHLER WES			
RED WEDNESDAY							BLACK WEDNESDAY						
AIRPORT ASH DAYANAR HILL BEZINGER BLAIR BRUSSELLS BUCKTAIL CARBON	CUNRY DARR DEPOT E. ESCHBACH E. KAUL ECKERT FILLMORE FOURTH	GRAPHITE GROTZINGER HALL HARRISON HAUBER HIGH JACKSON TO 175	JERSEY JOHN JONES KAIL LECKER LEHNER LINCOLN MENTZ	MONROE MULLIGAN NEUBERT PINE PONTZEER RETTDER ROSELY TO BLAIR	SCHISLE SIMMON SORG SO. MICHAEL 1094 TO LECKER RD STACKPOLE SWEENEY	THERESIA ST TROUT RUN VALLEY WRIGHT	ANTHONY AUMAHOEL BAUMER BERWIND CHAPEL VILLAGE CHESTNUT CROSS DECKERS CHAPEL EARTH RD AREA	E. ARCH E. MILL ELEMENTARY GLEN HAZEL TO SPORTS- MAN CLUB GYPSY HALLER IRON RUN JEEP	KALLAS KERRER KEYSTONE LENZE MAPLE MARKET MASON MCGILL MELODY MUENSTER	N. PAUL OAK PARK PATTISON PISTNER RACE RAILROAD RANDOM ROCK ROOSEVELT	SERVICE S. LOUIS S. PAUL TO AUGUSTINE S. ST. MARYS SHADY GROVE SHECKER TO TIMBERLINE SPRING SPRUCE	STATE SUGAR HILL SUMAR TAFT THUNDER TIMBERLINE TOWNVIEW UHL VINE TO 204 WALNUT	WILSON WINDFALL 1059 TO END W. ARCH W. CREEK TO 520 W. JOSEPH W. MILL W. RACE W. THERESIA RD.
RED THURSDAY - North Michael / Center Area							BLACK THURSDAY - North St. Marys / Washington Area						
ABBOTT ARNOLD BENEDICT CARDINAL CENTER CHARLES CHURCH	EAST JOSEPH ETHELDALE ENICH FOREST GAY GEORGE HILL	HADDERTY HOUSTON JOHNSONBURG LOMBARDO LYNCH MADRUS NICKLAS	N. LOUIS N. MICHAEL OLWELL PARADE PARKWAY POPE ROBSON	ROSEDALE SCHOOL SHERRY STRAUB SUNSET VERMONT VIRGINIA	WALBURGA W. DOWDOT WOLFEL	ADAM ARMORY ATLANTIC BANK BUNKER HILL CAROLWOOD COLUMBUS	DIAMOND DIPPOLD DOVE E. CONDOT EBEN EDWARD ERIE	EVERS FOX FOX HOLLOW GEIS AVE. GRANT IDA JEFFERSON	LAFAYETTE MADISON MARK N. ST. MARYS LAWRENCE PENH PRINCE ALLEY	RESERVE RIGHTMEYER RUSS LANE TERRACE TREMONT WASHINGTON	WINDFALL TO 1058 WOODLAND		

MATCH YOUR STREET WITH THE COLOR AND DAY. YOUR RECYCLABLES WILL BE PICKED UP ON YOUR COLOR AND DAY.

Recycling is Easy! Just Follow the Steps!

ONLY FOOD and BEVERAGE CONTAINERS

HOW TO PREPARE YOUR MATERIALS

GLASS - CLEAR, BROWN, GREEN

1. Rinse - labels can stay on
2. Remove all metal lids
3. No window glass, light bulbs, blue glass, pyrex or ceramics
4. No drinking glasses
5. Place in container (Do Not Break)
6. No Plastic Bags



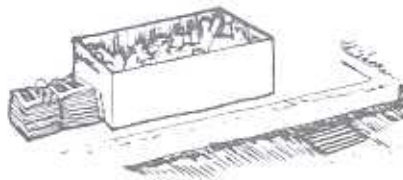
ALUMINUM BEVERAGE CANS

1. Rinse
2. Flatten, if desired, to save space
3. Place in container
4. No soup or vegetable cans
5. No Plastic Bags



NEWSPAPER

1. In bundles and untied plastic bags
2. Must be dry (will be rejected if not)
3. 10 lb. bundles
4. No magazines/no shiny inserts
5. No junk mail



Note: The special container provided for your recyclables remains the property of the City and must remain at each house or apartment. All houses or residents must call the City or ELK WASTE SERVICES for a container.

**Do Not Bag Glass and Aluminum.
No plastic bags please!**

1. GREEN DROP-OFF CONTAINERS FOR NEWSPRINT, MIX PAPER, & BROKEN DOWN CORRUGATED CARDBOARD.
2. GREEN DROP-OFF CONTAINERS FOR ALUMINUM, SOUP & VEGETABLE CANS

LOCATIONS: DEPOT ST. & SO. MICHAEL RD.

COLLECTION DAY

Place container at curbside by 7:00 A.M.