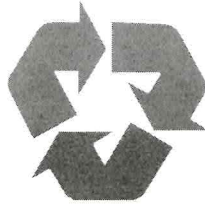


2012



CITY OF ST. MARYS CURBSIDE RECYCLING CALENDAR

FOR ADDITIONAL INFORMATION
CALL ELK WASTE SERVICES
834-6771 OR 781-1718
www.elkwaste.com

WHO: Elk Waste Services, Inc. will collect recyclables.
WHAT: Clear, brown & green glass, aluminum, and newspaper.
WHEN: Every other week.
WHERE: Place container at curbside by 7:00 A.M.

- **5** 4TH OF JULY 2012 PICK-UP
- **23** THANKSGIVING DAY 2012 PICK-UP
- **26** CHRISTMAS DAY 2012 PICK-UP

<p>JANUARY 2012 SUN MON TUE WED THU FRI SAT</p> <p>1 2 3 4 5 6 7 8 9 10 11 12 13 14 15 16 17 18 19 20 21 22 23 24 25 26 27 28 29 30 31</p>	<p>FEBRUARY 2012 SUN MON TUE WED THU FRI SAT</p> <p>1 2 3 4 5 6 7 8 9 10 11 12 13 14 15 16 17 18 19 20 21 22 23 24 25 26 27 28 29</p>	<p>MARCH 2012 SUN MON TUE WED THU FRI SAT</p> <p>1 2 3 4 5 6 7 8 9 10 11 12 13 14 15 16 17 18 19 20 21 22 23 24 25 26 27 28 29 30 31</p>	<p>APRIL 2012 SUN MON TUE WED THU FRI SAT</p> <p>1 2 3 4 5 6 7 8 9 10 11 12 13 14 15 16 17 18 19 20 21 22 23 24 25 26 27 28 29 30</p>
<p>MAY 2012 SUN MON TUE WED THU FRI SAT</p> <p>1 2 3 4 5 6 7 8 9 10 11 12 13 14 15 16 17 18 19 20 21 22 23 24 25 26 27 28 29 30 31</p>	<p>JUNE 2012 SUN MON TUE WED THU FRI SAT</p> <p>1 2 3 4 5 6 7 8 9 10 11 12 13 14 15 16 17 18 19 20 21 22 23 24 25 26 27 28 29 30</p>	<p>JULY 2012 SUN MON TUE WED THU FRI SAT</p> <p>1 2 3 4 5 6 7 8 9 10 11 12 13 14 15 16 17 18 19 20 21 22 23 24 25 26 27 28 29 30 31</p>	<p>AUGUST 2012 SUN MON TUE WED THU FRI SAT</p> <p>1 2 3 4 5 6 7 8 9 10 11 12 13 14 15 16 17 18 19 20 21 22 23 24 25 26 27 28 29 30 31</p>
<p>SEPTEMBER 2012 SUN MON TUE WED THU FRI SAT</p> <p>1 2 3 4 5 6 7 8 9 10 11 12 13 14 15 16 17 18 19 20 21 22 23/30 24 25 26 27 28 29</p>	<p>OCTOBER 2012 SUN MON TUE WED THU FRI SAT</p> <p>1 2 3 4 5 6 7 8 9 10 11 12 13 14 15 16 17 18 19 20 21 22 23 24 25 26 27 28 29 30 31</p>	<p>NOVEMBER 2012 SUN MON TUE WED THU FRI SAT</p> <p>1 2 3 4 5 6 7 8 9 10 11 12 13 14 15 16 17 18 19 20 21 22 23 24 25 26 27 28 29 30</p>	<p>DECEMBER 2012 SUN MON TUE WED THU FRI SAT</p> <p>1 2 3 4 5 6 7 8 9 10 11 12 13 14 15 16 17 18 19 20 21 22 23/30 24/31 25 26 27 28 29</p>

* PLACE AT CITY OR STATE MAINTAINED ROAD

<p>RED TUESDAY - Queen of the World Area</p> <p>ANNE ASPEN BAYBERRY BEECH BIRCH CEDAR CLARK COMET DENISE ELM EVERGREEN FALCON FORD GRACE GRANDVIEW LARCH LOCUST MARGARET MARTIN MERCURY PLYMOUTH POPLAR QUEENS RAMBLER SARA S. MICHAEL TO 802 VINE TO 728 WENDEL W. ESCHBACH WILLOW</p>	<p>BLACK TUESDAY - Benzinger Park Area</p> <p>ALPINE AUMANDER BEL VISTA CADILLAC CAPRI CATALINA CHERRY HILL * EARL EDGEWOOD FERN FLEMING * FREEDOM HEMLOCK HICKORY JERA LANG LAS. GLORIS LEMANS LIBERTY MALIBU MARIENSTADT * MCKENNDY NOVA PARKVIEW * PEARL ROBIN S. MICHAEL 803 TO 1093 SO. RIDGE SUNRISE TRAILER COURT TEABERRY VILLA VINE RD. 729 TO 947 WEHLER * WES</p>
<p>RED WEDNESDAY</p> <p>AIRPORT ASH BAVARIAN HILL BEZINGER BLAIR BRUSSELLS BUCKTAIL CARBON CURRY DARR DEPOT E. ESCHBACH E. KAUL ECKERT FILLMORE FOURTH GRAPHITE GROTZINGER HALL HARRISON HARRISON HAUBER HIGH JACKSON TO 175 JERSEY JOHN JONES KAUL LECKER LEHNER LINCOLN MERTZ MONROE MULLIGAN NEUBERT PINE PONTZER 1094 TO LECKER RD SCHISLE SIMMON SORG SO. MICHAEL WRIGHT THERESIA ST. TROUT RUN</p>	<p>BLACK WEDNESDAY</p> <p>ANTHONY AUMANDER BAUMER BERWIND CHAPEL VILLAGE CHESTNUT CROSS DECKERS CHAPEL EARTH RD AREA E. ARCH E. MILL ELEMENTARY GLEN HAZEL LENZE MAPLE MARKET MASON MCGILL MELODY MUEINSTER KALLAS KERNER KEYSTONE OAK PARK PATTISON PISTNER RACE RAILROAD RANDOM ROCK ROOSEVELT N. PAUL SERVICE S. LOUIS S. PAUL TO AUGUSTINE S. ST. MARYS SHADY GROVE SIECKER TO TIMBERLINE SPRING SPRUCE STATE SUGAR HILL SUMAR TAFT THUNDER TIMBERLINE TOWNVIEW UHL VINE TO 204 WALNUT WILSON WINDFALL 1059 TO END W. ARCH W. CREEK TO 520 W. JOSEPH W. MILL W. RACE W. THERESIA RD.</p>
<p>RED THURSDAY - North Michael / Center Area</p> <p>ABBOTT ARNOLD BENEDICT CARDINAL CENTER CHARLES CHURCH EAST JOSEPH ETHELDALE ERICH FOREST GAY GEORGE HILL HAGGERTY HOUSTON JOHNSONBURG LOMBARDO LYNCH MAURUS NICKLAS N. LOUIS N. MICHAEL OILWELL PARADE PARKWAY POPE ROBSON ROSDALE SCHOOL SHERRY STRAUB SUNSET VERMONT VIRGINIA WALBURGA W. CONDOT WOLFEL</p>	<p>BLACK THURSDAY - North St. Marys / Washington Area</p> <p>ADAM ARMORY ATLANTIC BANK BUNKER HILL CAROLWOOD COLUMBUS DIAMOND DIPPOLD DOVE E. CONDOT EBEN EDWARD ERIE EVERS FOX FOX HOLLOW GEIS AVE. GRANT IDA JEFFERSON LAFAYETTE MADISON MARK N. ST. MARYS LAWRENCE PENN PRINCE ALLEY RESERVE RIGHTMEYER RUSS LANE TERRACE TREMONT WASHINGTON WINDFALL TO 1058 WOODLAND</p>

MATCH YOUR STREET WITH THE COLOR AND DAY. YOUR RECYCLABLES WILL BE PICKED UP ON YOUR COLOR AND DAY.

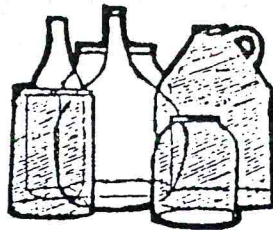
Recycling is Easy! Just Follow the Steps!

ONLY FOOD and BEVERAGE CONTAINERS

HOW TO PREPARE YOUR MATERIALS

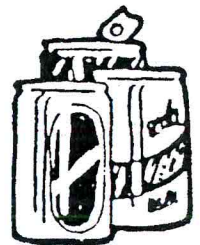
GLASS - CLEAR, BROWN, GREEN

1. Rinse - labels can stay on
2. Remove all metal lids
3. No window glass, light bulbs, blue glass, pyrex or ceramics
4. No drinking glasses
5. Place in container
(Do Not Break)
6. No Plastic Bags



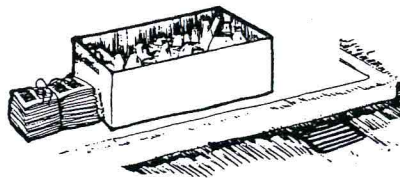
ALUMINUM BEVERAGE CANS

1. Rinse
2. Flatten, if desired, to save space
3. Place in container
4. No soup or vegetable cans
5. No Plastic Bags



NEWSPAPER

1. In bundles and untied plastic bags
2. Must be dry (will be rejected if not)
3. 10 lb. bundles
4. No magazines/no shiny inserts
5. No junk mail



Note: The special container provided for your recyclables remains the property of the City and must remain at each house or apartment. All houses or residents must call the City or ELK WASTE SERVICES for a container.

**Do Not Bag Glass and Aluminum.
No plastic bags please!**

COLLECTION DAY

Place container at curbside by 7:00 A.M.